

# BAUR Versand

LabelBuilder

*Version 3.4en*

---

## Contents

1	System Requirements.....	2
1.1	Operating System .....	2
1.2	Hardware .....	2
2	Label Material.....	2
3	Program Description.....	2
4	Entering Sizes.....	4
5	Printer Settings (Mozilla).....	5
6	Support .....	5

## 1 System Requirements

### 1.1 Operating System & Browser

A Microsoft Windows operating system with Mozilla Firefox internet browser version 45 or newer is required

### 1.2 Hardware

DIN A4 printer

## 2 Label Material

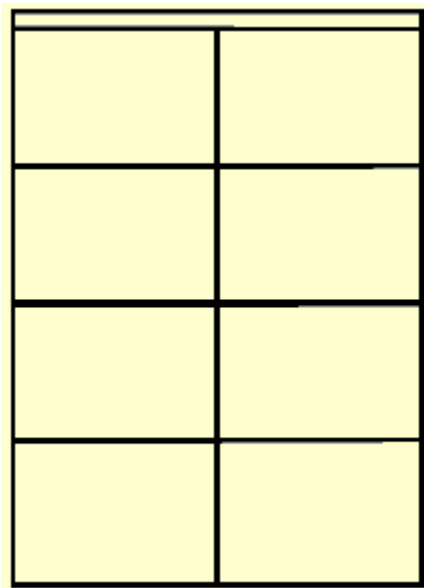
The label layout is designed for a DIN A 4 page (297 x 210 mm) with 8 labels.

Two layouts are available:

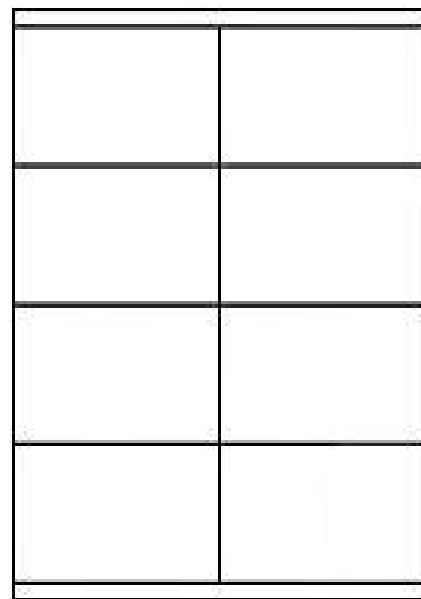
Layout 1: label size 105 x 72 mm with a top spacing of 9 mm

Layout 2: label size 105 x 70 mm with a top and bottom spacing of 8 mm

Layout 1 (105 x 72 mm)



Layout 2 (105 x 70 mm)



A possible source of supply is

[www.all4labels.com](http://www.all4labels.com) (Layout 1)

Thomas.Frank@all4labels.com

<http://www.herma.de>, Artikel-Nr. 4426 (Layout 2)

- Herma GmbH, Filderstadt –

## 3 Program Description

The web-based LabelBuilder can be started by clicking on the following links:

production environment (english): <https://label.baur.de>

production environment (german): <https://label.baur.de/index.php?language=DE>

After entering login and password the language can be chosen. Clicking on the button LOGIN the LabelBuilder is started and clicking on the button RESET all made entries are deleted again.

The following data has to be entered:

**Company No.**: list box, preset with clients/orderers of the settings<sup>1</sup>

**Supplier's No.**: input field, six digits, numeric<sup>1,2</sup>

**Order No.**: input field, six digits, numeric<sup>1,2</sup>

**Article No.**: input field, eight digits, numeric<sup>1,2</sup>

**Description**: input field 18 digits, alphanumeric<sup>1</sup>

**Size (Num)**: input field, three digits, numeric<sup>1,2</sup>, see 4.

**Size (text)**: output field, see size table (see 4)

**Product quantity in carton**: input field, 3 digits, numeric<sup>3</sup>

**Carton No. from / to**: input field, three digits, numeric<sup>3</sup>

A consecutive number x/y can be printed on the labels. The indicated carton number is printed on each label and incremented according to the entry made at No. of labels to be printed.

**No. of labels to be printed**: input field, 3 digits, numeric<sup>1,3</sup>

**Placeholder (Separator)**: yes/no field, generates one blank label for an odd number of labels and generates a line of blank labels for an even number of labels.

**Offset**: listbox, determines where the first label is printed on the first side, in order to reuse partially imprinted label sheets. If doing so please do not print on the position where the label has already been removed. This might damage your printer.

0	1
2	3
4	5
6	7

The buttons have the following functions:

**COPY BARCODE**                      Data can be entered via scanner (barcode of an existing carton barcode label). The data is allocated to the corresponding input fields of the main

<sup>1</sup> required fields and must be filled

<sup>2</sup> numbers with less than the specified number of digits must be filled with leading zeros

<sup>3</sup> numbers with less than the specified number of digits must not be filled with leading zeros

dialog automatically. The remaining input fields can be completed or edited by keyboard.

ADD	Adds the completed label/s to the printer queue
GENERATE	Generates all labels in the printer queue
CANCEL	Deletes the last print job from the queue
RESET	Deletes all print jobs from the queue

## 4 Entering Sizes

Sizes are always entered numerically.

The following rules are valid

If the article has no size, 000 is entered in the field "Size (Num)"

If the article size is a single digit, two leading zeros have to be added for the entry in the field "Size (Num)", e.g. size 7 = 007

If the article size is two-digit, one leading zero has to be added for the entry in the field "Size (Num)", e.g. size 38 = 038

If the article has a double size, the smaller one is used. Leading zeros have to be applied to the outlined rules, e.g. size 38/40 = 038

If the article has a comma size, then the comma is void when filling the field "Size (Num)", e.g. size 0.5 = 005; size 7.5 = 075 or size 11.5 = 115

If a carton contains items with alphanumeric sizes, the numeric size has to be determined and entered according to the table below. E.g. size s = 904 in the "Size (Num)" field

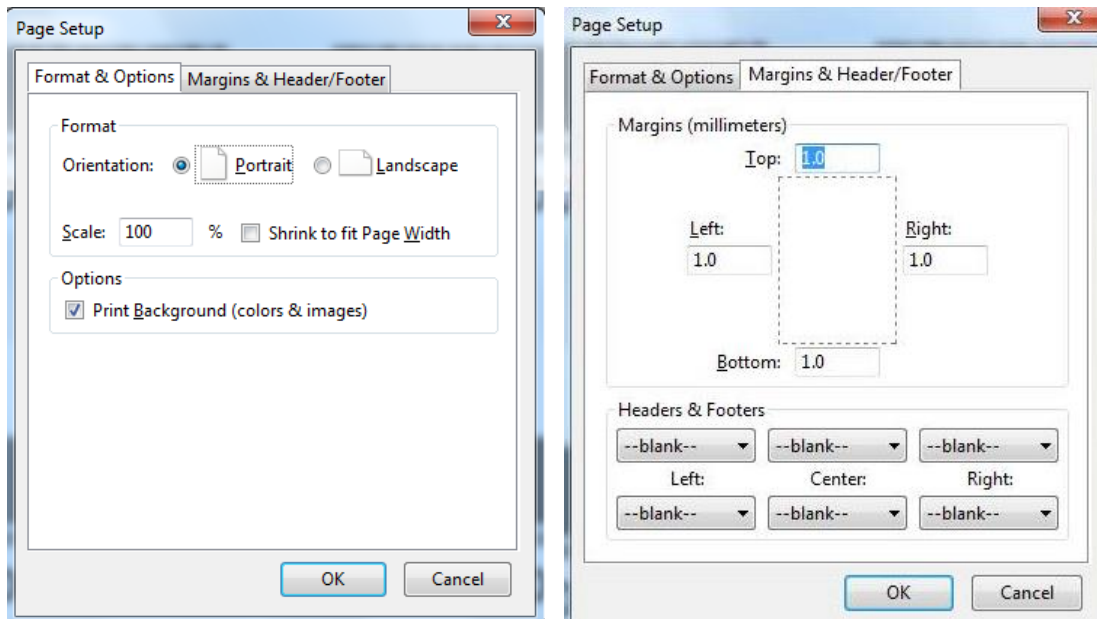
Conversion table for numeric sizes <-> alphanumeric sizes:

Numeric size	Alphanumeric size
901	3XS
902	XXS
903	XS
904	S
905	M
906	L
907	XL
908	XXL
909	3XL
955	ML
910	4XL
921	5XL
922	6XL
923	7XL

Numeric size	Alphanumeric size
924	8XL
945	SM
965	L-XL

## 5 Printer Settings (Mozilla)

The printer settings have to be set in the browser (Mozilla Firefox) as follows:



For an optimal printing result ECO printing mode has to be turned off.

## 6 Support

For questions regarding packaging instructions please contact:

Mail: [ulrike.lenhardt@baur.de](mailto:ulrike.lenhardt@baur.de)

Phone +49 9572 91 2050

For technical questions please contact:

Mail: [it-helpdesk@baur-fs.de](mailto:it-helpdesk@baur-fs.de)

Phone: +49 9572 91 6060